



RUAWAI RAMBLER

A Newsletter for Ruawai and Surrounding Area
From the Ruawai Promotions and Development Group



December 2020

Seasons Greetings from Portstar Plastics Ltd.

Our Sponsor for this Issue

From the Editor

Welcome to the (yes wait for it) 6th Christmas edition of the Ruawai Rambler! The first edition consisted of four pages, now we regularly have twelve pages. So we have grown. For a newsletter we need news, so thank you to all contributors. We also need the funds to pay for the printing and that is where our advertisers and sponsors are needed. Nearly all local businesses, and some from other areas, place ads. Our thanks to you and our sponsors. Our sponsor this time is Portstar Plastics. Owner, Mark Jeffries, wrote in our September issue that they make buoys, pile caps and nautical markers. Now they also make water tanks under the trade name Evolve - see the ad below. So, if you are in the market for a water tank (a good idea if our summers continue to be so dry) go see them.

If you are going to do some Christmas shopping, think about our local shops. Orr's Pharmacy, Goodies Galore, Funky Creations and Ruawai Traders & Boutique have a good range of interesting gift ideas. So, why not go and have a look! For Christmas or New Year's dinner, check with our local Steak & Pizza Bar. And, if amid all the busy times, you just want a nice cuppa', stop in at The Well Cafe.

RPDG is again organising the yearly Christmas parade. Thanks to Elaine Crompton who does much of the work behind the scenes. There will be a big raffle with a wheelbarrow full of goodies as a prize. We will also have a Free Sausage Sizzle evening a few days later. And of course Santa will be present. See the complete Christmas programme further on. We hope to see you all there. For information about the Ruawai Rambler or for advertising contact: **J.H.Wessel; Ph.: 439 2507; email: jhwessel@xtra.co.nz**

**HAPPY HOLIDAYS AND BEST WISHES FOR THE NEW YEAR FROM
RUAWAI PROMOTIONS AND DEVELOPMENT GROUP**

Council Mark says: The Kaipara Harbour just had a birthday

I am writing this several days before the national elections. I hope you got what you asked for. One thing that we all got recently was some help with restoration of the Kaipara Harbour - courtesy of a \$100 Million present from the government to go towards the cost of remediation works on land within the harbour's catchment. I attended the ceremony held at the Waihaua Marae on behalf of Council where the Memorandum of Understanding was signed. It was a massive event involving Government Ministers, Iwi Elders and four Council Mayors and Chairs. I was very proud of the presentation by our own Mayor, Jason Smith, in such company. The only person who might otherwise have stolen the show was the MC, Tyrone, who brought a joyful tone to the proceedings.

While we do not know yet just exactly how this money will be spent, you can expect a lot of it to involve planting along waterways. It is important to recognise that it is a subsidy, not a grant. This means that another \$100M needs to be found from 'local sources'. KDC is not a signatory to this MOU, but the Northland Regional Council and Auckland Council both are. In other words, this deal has implications for your regional council rates. Most of the Kaipara District is within the harbour's catchment. I urge you to find out when the NRC is consulting the community about its next ten-year Long-term Plan over the coming months. Very possibly you will see a new targeted rate for those properties directly affected. And possibly a new loan in the mix as well, unless some other external benefactors can be found. I will do my very best to ensure that affected landowners get credited with their resources, time and any land which is retired as a result of the restoration activities as their contribution to the local share.

Mark Vincent

Song for the day: After the Goldrush, Neil Young: <https://www.youtube.com/watch?v=d6Zf4D1tHdw>

Here To Help

In my October Councillor column I laid out a challenge – “if you want things to be better than they are right now in your community maybe there is something you can do about it yourself.” Here’s a further bit of information to help you with this. One of the consequences of being elected to Council is that I have become a Trustee of Volunteering Northland (VN), which is a kind of dating service for voluntary organisations and people who, for whatever reason, have time to give. They also arrange various forms of training, like the first aid course I completed recently. The Organisation is based in Whangarei but is wanting to increase its involvement with people and groups across the whole of Northland. Most organisations could do with more volunteers and getting signed on with VN is one way of achieving this. If you want to find out more, you can give me a call. Or alternatively give one of the team at VN a call – 0800 865 268.

Mark Vincent; Trustee

Sometime last year, Lorraine Littler came to RPDG with a suggestion for a Face Board - the type of board with photos or paintings and holes at appropriate places to put your face and have your photo taken. The Committee all thought it a great idea. Lorraine first presented a basic design and then proceeded from there. It was not an easy task and Lorraine often was her own worst critic. However, with encouragement she went on; and here is the final result, which received unanimous approval from our Committee. So, well done Lorraine and thanks for your hard work. **J.W.**

Photo Opportunity Board For Ruawai



You may remember (at the beginning of this year) the Rambler had an article on the Face Board that Promotions had planned for the town. As the designer, it contains the main features that I feel Ruawai is known for and make it the special place it is. We were successful in obtaining a grant from KDC for this purpose.

The goal of having the sign is to have something bright and happy-looking to attract the attention of children and to catch the eye of adults as they're passing. Hopefully, they will stop for a photo opportunity (the faces of the cyclist, kumara and farmer have holes people can put their faces into) and then they may spend some of their time in our town and some money in our shops! At the time of writing this, the finished version of the sign is at the Sign Maker's awaiting printing.

The sign will be installed on the Village Green near the Gazebo. Many thanks to RPDG for their support, KDC for the funding, D & D Signs for their advice and printing of the sign, Wild Side Publishing for the graphic design work, Jan Bellamy for the high

quality photography and Tony King for drawing up the support frame plans and offering to set up the board when it is ready.

Lorraine Littler

Service for all types of Mowers
and Chainsaws

Pickup & Delivery Service available
Phone 09 439 8881



Godfrey's
CHAINSAWS & MOWERS

Open:
Monday - Friday: 8.30 am - 5 pm
Saturday: 9.30 am - 1.30 pm



GOODIES GALORE

Dianna Simpson
dianna.goodiesgalore@gmail.com
02040062821

Find us on Facebook @ Goodies Galore

MAUNGI MEATS

A Real Town Butchery

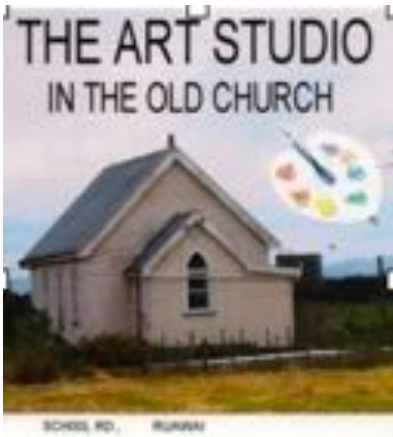
Ph : 09 431 8061
 Email :
 butcher@maungimeats.co.nz

FENCING SPECIALISTS
 CHRIS HICKEY 027 561 1719
 email: fencingspecialists.nz@gmail.com

ALL ASPECTS OF FARM & LIFESTYLE FENCING INCLUDING:
 Entrances ♦ Post & Rail
 Stock Yards ♦ Custom Gates
 Riparian Lots ♦ Netting
 Post & Batten ♦ Retaining Walls

FENCING CONTRACTORS NZ MEMBER

 Find us on 



RUAWAI AUTO SERVICES

*For all things automotive
 See the best in town!*

CALL US NOW!
09 439 2424
 23 Freyberg St, Ruawai

**DIESEL TUNING CHIPS
 AVAILABLE HERE NOW -
 FOR TRUCKS, UTES,
 TRACTORS AND MORE!**



Greetings from Frances and Barry Casey at the Art Studio:
*We wish you all the best this holiday season
 and throughout the year, Merry Christmas!*

The "Moosletter" comes compliments of Janine Hames, Veterinarian at the Vet Centre. It has some good advice for pet owners esp. at this time of the year. Thank you Janine for taking time out of your busy schedule.

The Moosletter

Hello everybody! As always, the end of the year is rushing up rapidly and we're all trying to get jobs done before Christmas arrives. Some of our Christmas messages remain the same each year. Please keep dogs, especially little ones, away from chocolate. Every year our poor vets on call have to see animals which have stolen a present from under the tree, or opened a door and stolen chocolates from a cupboard, or stolen chocolates from a bag that was sitting ready to be taken to a party — and put themselves in danger from methylxanthine toxicity.

Also don't let anybody give the little dog the fat of the ham for a treat – pancreatitis is painful and life threatening.



So that's the "don'ts". Do have a good break if you can. Once the bulls are out and the crops are in, hopefully our farmers can relax a bit and get some fishing in.


Exciting news at the Clinic is that we now have a digital X-ray in the clinic. It gives the most amazing images and we now no longer have to send animals to Maungaturoto to get imaging done. It also is portable so we can do horse or cow X-rays in the field now. Digital X-rays are also more environmentally friendly as there are no chemicals necessary for picture development; so it's a win-win all round.

So enjoy the holidays and spending quality time with your families and animals.

Janine Hames

**Tokatoka Views
 B&B/Farmstay**

 Equestrian Interest
 Country Lifestyle

80 Tramline Road,
 Ruawai, Northland.
 Like us on  facebook

Home: 09 439 2437
 Sara: 021 0774 947
 Peter: 022 405 6439
 email: sara.ball@xtra.co.nz

Sara Ball - Celebrant

Weddings   gethitchednorthland

Funerals 

Naming Ceremonies 

Contact - Home: 09 4392437
 Mobile: 021 0774 947

Community
Christmas Carol Evening



Hosted by the Ruawai Community Church
Wednesday Dec 23rd at 7pm
At The Church, 47 Freyberg Rd, Ruawai

Featuring items by some local talent, young and old, plus a sing-a-long of our favourite carols
Everyone welcome

Enquiries to Alex Bickers 0212770083

Ruawai Community Church

We, as a farming community, are busy getting kumara in the ground, cows in calf, silage in and grass covers ready for the summer and then we are ready for the Christmas period. We are planning our holidays and looking forward to being hard out doing nothing.

I love the way we celebrate Christmas with our local parade, and getting together as families. It is interesting that we still have that picture of a white Christmas. Snowmen, reindeer and sledges. I think our summer Christmas is much better and in the Bible when Jesus was born, the shepherds were sleeping out in the paddocks at night with their sheep - it was warm!

So come and enjoy the Christmas Parade in town on Saturday Dec. 12. And then on Wednesday evening Dec 23, we have the Community Carol Service at the Church starting at 7pm.

In the busyness of the season we can be blinded to the reason for the season. This time is about the birth of Jesus and His reason for coming. Jesus summed it up when he stood up in front of a crowd and read Isaiah 61:

“The Spirit of the Lord is on me, because he has anointed me to proclaim good news to the poor. He has sent me to proclaim freedom for the prisoners and recovery of sight for the blind, to set the oppressed free, to proclaim the year of the Lord's favour.”

On behalf of the Ruawai Church have an awesome Christmas and a Happy New Year. **Des Bickers**

Your Local Painting Company



McCONCHIE Painting
RUAWAI

glenn McConchie
TRADE QUALIFIED
0274888656

glenn123@outlook.co.nz
FREYBERG RD RUAWAI



A Year of Change – Councillor Curnow's Column

2020 has certainly been an unusual and difficult year for many. Covid-19, Lockdowns, loss of travel opportunities, economic upheaval and watching the health crisis spread around the world has been upsetting for many and range of ways. But not all the changes have been negative.

For Council, 2020 has seen an unprecedented amount of central government funding flowing into our District through PGF, Shovel Ready Funds, Worker Redeployment Funding and more recently the Water Infrastructure Funding. Tens of millions of dollars need to be spent in very short timeframes. This funding will see our major infrastructure such as roading, the three waters and our parks and reserves get a boost that we could never have predicted. It does bring some challenges with it though. Council has to find new ways to work with contractors; quicker, more dynamic and efficient ways. Our staff have developed an agility that we could never have predicted just 12 months ago.

This year of change has also seen Council deciding to establish a Maori ward in Kaipara. We voted for this with no votes against at our October Council meeting. The reasons why this makes sense are complex but, in essence, it is about understanding that the current geographic ward system has not served our Maori communities well. Rather than expecting a different outcome from doing the same thing, Council has decided to try a different, more inclusive approach that honours the principles of the Treaty of Waitangi more effectively.

Maori people in Northland have a more difficult life. They are over-represented in health and unemployment statistics. The Northland District Health Board states in its 2020 evaluation of Northland's health profile, "Māori experience low health status across a range of health and socio-economic statistics. They comprise over one-third percent of Northland's total population, but 52 percent of the child and youth population, a key group for achieving long-term gains. Māori experience early onset of long-term conditions like cardiovascular disease and diabetes, and their life expectancy is about nine years less than non-Māori." According to Ministry for Business, Innovation and Employment, Maori are more likely to be unemployed, to work in lower skilled jobs and to not be engaged in training opportunities. Maori make up a significantly higher proportion than they should, of those in our prison system.

On the flip side, Maori in Northland are major land holders, have a growing level of professionalism with younger, well-educated people returning from urban centres and overseas and wanting to be part of changing outcomes for their iwi and hapu. There is a growing ambition amongst Maori to turn things around. Such a change would benefit all of us. Poor social outcomes for any sector of the community costs everyone.

The traditional model of democracy in local government works on a geographic ward system in which people from a certain area vote for someone to represent them. Given the fact that Maori generally represent a minority on a geographic basis, the cards seem a little stacked against them in this model. Councils have responded in the past with Maori committees who can make recommendations to Council who then makes the decision. While this is a step in the right direction, it's not Maori being part of decision making, which is a requirement on Councils under the Local Government Act.

Which brings us to the Maori ward system (which has been the norm in central government for decades). In Kaipara, this is likely to mean one seat guaranteed for Maori at the Council table. Currently we have eight Councillors and a Mayor. A Representation Review next year will help us decide how we would add that one Maori seat (whether we have an extra person, or whether we replace one geographic ward councillor with a Maori councillor). The impact on the rates is nil. The Remuneration Authority sets a pool of money for Council to use to pay Councillors. How many people that gets split amongst is up to Council. The dollar value stays the same, however many we number.

The community currently has the right to request a referendum (or poll as its also called) by collecting at least 790 signatures in Kaipara. History shows us that generally that referendum will result in the Maori ward not going ahead, leaving the status quo in place. Minister for Local Government, Nanaia Mahuta has signalled that she intends to change the legislation but we do not have any clarity at this point, exactly what that change could be, although chances are it will at least result in it being easier to create Maori wards with the goal of ensuring more effective Maori representation on Councils.

I am happy to answer any questions you might have about our decision to progress with a Maori ward (or any other matters). Please feel free to call me (021 667 124) or email me on acurnow@kaipara.govt.nz.

Finally, I wish you a very happy Christmas and Holiday Season.

Anna



**Kaipara
Cleaning
Co.**

Tim & Sharlene Lord

- Pest Control
- Carpets & Upholstery
- Interior and Exterior Home Cleaning

e-mail - kaiparacleaningco@farmside.co.nz
Facebook - www.facebook.com/kaiparacleaningco

Phone 021 114 6729
www.kaiparacleaningco.co.nz

Ruawai Garden Club

Hello to all the gardeners out there. We are certainly having some lovely days at the moment. Good for cleaning up all the bits that get away from us in winter. The Club has had a meeting and we decided to have a potluck lunch at our November meeting (which will have taken place on the 19th of November). So it was planned to have a meeting first and have everyone bring a plate of finger food for lunch. The President is currently working on arrangements for our Xmas function; but nothing finalized yet. So we will look

forward to Xmas, and the New Year. Our fervent hope is that the vaccine underway will soon be available and life can become normal again. We're not forgetting the rest of the world has suffered so much more than us. We DO SO live in the best country. Happy weeding all. **Merle Jackson**

IN STOCK NOW!



PALM KERNEL TRAILERS



LEVELLERS



ROLLERS

View our website: www.cromptonengineering.co.nz

CROMPTON
ENGINEERING



31 Jellicoe St, Ruawai • Ph 09 439 2393

NEW SHOW ROOM NOW OPEN!

GREAT NEW LOOK IN STORE!

PRODUCTS AT GREAT PRICES!



A: 18-22 FREYBERG ROAD, RUAWAI | PH: 09 439 2243 | FB: @BEDSNMOREOUTLETSTORE



News from Lions Club of Ruawai

Despite the effects of COVID 19 our club is still alive and progressing! We held a successful BINGO Night recently and plan to hold another one before too long. November is the time for a Quiz night. December is Christmas Parade time and we are running a "Decorated Wheels" section in the Parade. This includes all sorts of wheeled vehicles – bikes, wheel chairs, scooters etc.

We are very sorry we are unable to hold our Senior Citizens' Christmas Function because of the risk of COVID 19.

Another continuing project is reviving the Te Kowhai Reserve in Te Kowhai Road near the Awaroa Bridge. This project was started by the Gatehouse family around 2006. We have been donated over 30 more trees that have been planted and are growing well. We have held several working bees; weeding, spraying and clearing all the weeds including fennel, cape ivy and convolvulus. If anyone would like to join us in caring for the trees (large and small) and helping us turn this area into a native tree area please contact Jim or Dorothy Simpson – 4392557 or 021 315246.

We are planning to have our auction next year – 13 March 2021.

The Lions Club of Ruawai focuses on serving all sections of our community through many projects and also provides an opportunity for like-minded people to meet socially. If you would like to know more about our Club and are interested in coming to a meeting please contact Rosemary 027 2012 008 or Dorothy 4392557

Footnote: The RPDG welcomes the inclusion of the Ruawai Lions "Decorated Wheels Competition".

Judging and Prize-giving to be managed separately by Ruawai Lions. Participants in this competition are advised that the parade leaves the Church grounds at 11am.

Books @ Ruawai

secondhand books/music

Now Open

Monday & Tuesday: 9 - 12 am

Wed., Thurs. Fri.: 2 - 4pm

Saturday: 10 am - 1pm

And other times by request.

Phone: 027 200 5653

022 073 9752

Shop phone: 439 2044

T. GLASS

PANELBEATERS

since 1984

Replacement or repair of
stonechip windscreens

5 PORRITT ST.

RUAWAI

Ph. Fax. (09) 4392416

email: tgkumara@yahoo.co.nz



Sue's Book Corner

Sue is an avid reader as you can tell from her regular contribution to our Newsletter. If you want to know anything about books, chances are Sue can help out. You can talk to her in the shop of Books@Ruawai.

Sue has told to me that the books she mentions in this column are not necessarily available in the book shop. **J.W.**

On left, just a small section of all the books available in Books@Ruawai

Mudlarking by Lara Maiklem

Mudlarks are river scavengers; but the author, Lara Maiklem is more like a time traveller. She uses old maps as guides to London's former boatyards, jetties and great houses, then scours the foreshore of the Thames looking for links to another life. Roman brooches, clay pipes, Mesolithic flints to name a few of her finds. As the tide ebbs and flows the contents shift and change. Years ago mudlarking was a job for the destitute; these days you need a permit and belong to The Society of Mudlarks. Lara weaves reflections of her own life with past lives, making this a wonderful book for history lovers.

The Evening and the Morning by Ken Follett



This is the prequel to the Pillars of the Earth trilogy. It takes you to 997CE (997BC), Viking raids and before Kingsbridge came into being; and ends where Pillars of the Earth begins. Three lives intertwine - a young boatbuilder, a Norman noblewoman and a monk who dreams of transforming his humble abbey into a centre of learning admired by all Europe. A must read for fans of Ken Follett.

Agent Sonya by Ben McIntyre

The wonderful life of the secret agent who travelled the world, kids in tow, fooled MI5 and passed Atomic secrets to the USSR. Born Ursula Kuczynski, well educated, she was recruited as a communist spy. She had 3 children by 3 different men, moved to the Soviet Union, Switzerland, London, and rural Oxfordshire - spying in all of them very successfully. Escaping detection partly because no-one believed a housewife could do all this.

The idea that a housewife and mother cycling around a rural English village in 1942, baking scones and fitting in with village life could, in reality be one of the greatest female spies in history fascinated me, I hope you enjoy this as much as I did.

V2 by Robert Harris

The plot evolves around two main characters: A German rocket scientist in Occupied Holland firing V2 rockets at London.

Kay Connelly, actress turned Intelligence Officer hunting to locate and neutralise the threat. The story plays out, their destinies entwined on a collision course; twists, turns, suspense, this has it all. If you like thrillers or WWII tales, this is for you .

Sue

 <p>ArborCare TREE MAINTENANCE</p> <p>Scott FitzPatrick & June Bolton P. 0800 HOTWOOD M. 0274 599 363 info@arborcaredtm.co.nz www.arborcaredtm.co.nz</p>	 <p>Cut it! Chip it! Grind it!</p> <p>Qualified & Insured Arborist</p>	<p>Carrfields Livestock</p> <p>Andrew Simpson Your Carrfields Agent for Kaipara/Rodney area</p> <p>CONTACT Andrew Simpson PH 027 449 1228 EMAIL andrewsimpson.ns@hotmail.com</p> <p>BEEF / DAIRY / SHEEP 100% NZ owned</p>	<p>WELLSFORD SALE</p> <p>MONDAYS 12:00pm - Store Cattle Steers Bulls Heifers Weaner</p> <p>TUESDAYS 11:00am - Sheep 12:00pm - Prime Cattle Steers Bulls Heifers Boners 11:00am - Calves (seasonal) 12:00pm - Dairy (seasonal)</p> <p>DARGAVILLE SALE</p> <p>THURSDAYS 11:30am - Feeder Calves 12:30pm - Store Cattle</p>
--	--	---	---

Special Exhibitions at the Kauri Museum

Creating with Kauri Maker Series No.2 Jewellery – Runs until 28 February 2021

The Kauri Museum tells stories of the kauri tree, the kauri industries, and people who made a living on this land. Twenty first century eyes look upon the loss of our ancient kauri forests with regret. They desire a different future for their grandchildren, one that looks more towards the conservation and regeneration of our natural environment.

In response to the current plight of the majestic kauri, the Museum has created an annual exhibition called the Creating with Kauri - Maker Series. This aims to raise awareness of the importance of protecting and regenerating the kauri and our forests.

The maker tradition runs deep at The Kauri Museum. Within the collection are many pieces hand crafted from timber and kauri gum. Jewellery features among some of the most poignant. These pieces speak of their makers who took joy in working the materials to create enduring legacies. They also reflect the purpose for which they were made and are imbued with stories that later generations discover and marvel at.

The exhibition is the second in our Creating with Kauri Maker Series. On a practical level, we use kauri timber and gum that was sourced decades ago for educational and museum fund raising purposes, for these exhibitions. The Kauri Museum supplies the artists and craftspeople with raw kauri products to create works to be included in a themed exhibition at the Museum, where the works are for sale.

For this year's Maker Series we invited artists and contemporary jewellers from all over Aotearoa to create jewellery. The jewellery could take any form. The alchemy evident in the work of the jeweller is the ability to turn raw materials into portable works of art.

Fingers Contemporary New Zealand Jewellery Gallery actively encouraged participation in the project amongst their jewellers. The 98 works in the

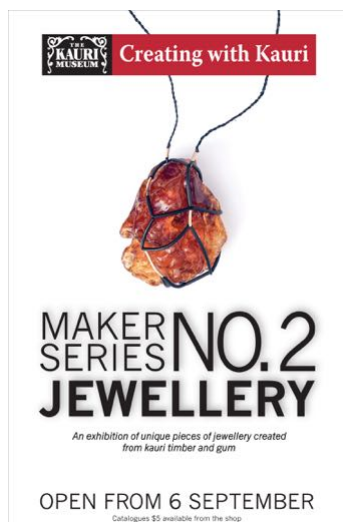
exhibition highlight the engagement of our contemporary makers with the kauri story past, present and future, introducing new audiences to contemporary jewellery and new makers to kauri.

The exhibition catalogue can be found via our website www.kaurimuseum.com

We encourage you to come over for a visit soon. You may wish to purchase an Annual Pass for just a few dollars more, so you can see all the special exhibitions throughout the year.

The Kauri Museum and gift shop is open 7 days a week, 9am – 5pm. Closed Christmas Day.

Phone: 09 431 7417



Images:

Acorn Necklace: Hand carved, early 1900s, by James Joseph Nightingale Griffiths of Huia, for his bride Olivia Margaret Kemp at Dargaville.

Ring: Jacqueline Morren 2020.

Kauri Snail - Hairpin: Jane Dodd 2020.



The Kauri Museum Gift Shop

The shop at the Museum does not just carry items for tourists. If you are looking for that special or different Christmas gift, this is the place to look. There is a great range of jewellery, items of clothing, various items of beautifully carved kauri, interesting games for kids, books etc.. **J.W.**



Anthony Martinovich
Ruawai Tyre Service
 33 Jellicoe Road
 p. 4392 492
Service you can trust

COMPACT 1100 LITRE RAINWATER TANK



TANK

- Ideal tank to use in small spaces. Compact harvesting and storage of rainwater.
- Useful capacity for watering the garden or washing the car or boat.
- High quality, easy to handle.
- Tanks can also be added to for easy expansion for future requirements.
- Designed to AS/NZS 4766:2020 Water Tank Standards.
- Made from food-grade polymer suitable for the storage of drinking water.
- UV stabilized for long term life
- 10-year warranty
- Quick inspection via 450 mm diameter lid
- One pre-drilled 32mm threaded outlet
- Available in a range of colours to suit your requirements:
 Beige, Mist Green, Heritage Green, Mountain Blue

SPECIFICATIONS

- Capacity: 1100 litres
- Vented Lid: 450mm
- Four lifting or tie-down eyes
- For potable water storage between 1-23 degrees (Celsius)

DIMENSIONS

- Height: 1920mm Width: 940mm
- Weight: 33kg Lid: 450mm
- Fitting: 32mm

MANUFACTURER

Made in Northland by Evolve Moulding
 37 Jellicoe St Ruawai
 09 439 2250 admin@portstarplastics.co.nz

FUELING YOUR SAVINGS!

UP TO 8¢ OFF per litre

Challenge is the only fully owned and operated Kiwi service station network supported by SuperGold. That's why when you fill up at your local Challenge station, you'll save up to **8 cents per litre** on fuel!

Visit Challenge Ruawai your friendly one stop shop for all your motoring and convenience needs.

Ruawai Motors
 Jellicoe Road, Ruawai
 Open 7 days, 7.30am - 7.00pm

CHALLENGE !
www.challenge.net.nz

Broken Windows
Cat Doors
Ranch Slider Rollers
Latches and Catches
Caravan Windows
Rubber Seals
Table Tops; Lead-light Repairs
Phone Kyle: 021 137 6353

RIVERSIDE GLASS & GLAZING

How to Avoid Christmas Burnout

It's coming up to that time of year again where there is an increased demand on our time, energy and money. Sometimes it's easy to feel burned out; there's parties, presents to buy, extra pressures and demands at work; it can feel overwhelming...

I'm here to remind you to take a deep breath.... and another... and one more... really savour this moment right now. Perhaps you've got a cup of tea as you read this... notice the weight of the cup; the way it feels in your hand... slowly move the cup up towards your face... slowly, gently breathe in the aroma of it... and as you place the cup against your lips, notice the pressure of it. Now take a slow... deliberate sip; notice the sensation of the liquid in your mouth, the texture and taste before you swallow. Notice what it feels like to swallow, and notice the sensations you experience as the liquid glides down your throat... Slowly, consciously place the cup down. Close your eyes and take a slow breath in and exhale out.



Moments like these are called micro-meditations and can take just a little bit of time. They can be done in the car, at the supermarket, during a work break, on a walk, anytime that you have a moment where you can pause. Done several times a day they can help you slow down the heart rate, reduce blood pressure along with reducing the emotional stress and anxiety you may be feeling from external pressures that can leave you feeling torn, overwhelmed and uncertain. As you gather your energy together, you are then better able to refocus and make better choices. If you enjoyed this, you may also like to join the Facebook group “Dare to be Magic” for women who are on the journey to becoming the best version of themselves – peace, joy and confidence: www.facebook.com/groups/daretobemagic. **In Bliss, Carrie**

Ruawai Kindergarten

Northland Kindergarten Association

Exciting changes are afoot here at Ruawai Kindergarten. As of 11th Jan 2021, we will be open for 48 weeks of the year. This will mean that Kindergarten sessions will run throughout the traditional school holidays. The Northland Kindergarten Association feels this move will benefit many Kindergarten families with working parents and allow Kindergartens throughout the North to stay relevant now and into the future. We will also welcome a new 0.5 teacher into our team from 2021.

Our teaching team are excited to be offering these new session times to our families next year and are more than happy to talk through it all with anyone in the community. From all the tamariki and kaiako, we wish you all a very Merry and Safe Christmas and a Happy New Year. New enrolments welcome and please feel free to pop on in and explore our amazing purpose build ECE environment.

Our hours are Monday to Friday 9am – 3pm.

The teachers are Teresa Robertson (Head Teacher),
Chanelle McLaughlin, Lisa Matthews,
& Kyla Johnson (Office Administrator/ Lunch Cover Teacher).

4376A SHWY 12 Ruawai (09) 4392415 Email:
ruawai@nka.org.nz or visit the Ruawai Kindergarten
Facebook page.



MEMORIES of RUAWAI, TOKATOKA and REHIA

By Violet McLeod

A Great Christmas gift

Available from

**Farm Source, The Well Cafe, The Kauri Museum
and Suzanne Oud (439 2390)**

Memories of Ruawai, Tokatoka & Rehia

This book by Violet McLeod has been around for quite a few years. Violet’s daughter, Suzanne Oud, organised a new edition with better print and much improved quality of the photos. If you have lived in Ruawai for many years, this book will bring back memories. If you are a relative newcomer, you will enjoy the stories of people and incidents of an earlier Ruawai. Well worth buying for yourself or someone else. **J.W.**



24hr Emergency Service
 thevetcentrenorthland.co.nz

**MERRY CHRISTMAS
 AND A SAFE AND
 HAPPY NEW YEAR TO
 YOU AND YOUR PETS
 FROM THE VET
 CENTRE STAFF**



Four Clinics proudly servicing the Kaipara and surrounds
 Ruawai: 09 439 2506 23 Jellicoe Road

We Care Animals People Community

Ahoy from the Boating Club!

Merry Christmas to you all! We hope you all have a well-deserved break and get a chance to enjoy this wonderful part of the world. With the foreshore and stop bank on our door step, it can be a great place to spend some time over the coming Summer to enjoy the cool air on those hot days. A few months back we placed the last poles down at the far end of the ramp. Hopefully, we'll put the decking on in the next few months, tide and time willing. This facility belongs to the members of the Boating Club but is open to anyone who wishes to use it. Please use common sense around it: *Park your trailer so other users can park as well; it gets very full. *Back your vessel out if the tide is coming in. Back toward the last pole on the left - and the opposite if it's going out. *Don't

attempt to do three-point turns inside the ramp as the outboard props damage the walkway when they hit. If you wish to become a member, there are forms on the Notice Board at the ramp or at the Challenge Service station. \$30.00 for a Boating Member or \$15 Social. After a gift for the person who has every thing? We have Boating Club shirts for sale: Adults \$60; Kids \$50.

Contact: Tony Oud - 021 0233 3507. See ya on the water (if my boats going).

LOL
 Lugtigheid Contracting Limited

- Mow, Rake, Bale & Wrap
- Stack Silage
- Discing, Power Harrowing with airseeder & Drilling
- Effluent, Lime & Fert Spreading
- Digger, Scoop & Trailer Work

Call or email
 Glen Lugtigheid 021 439 748
 glenlugtigheid@gmail.com

The Well Cafe

Open Hours
 Monday to Saturday 8am - 2.30pm
 23 Freyberg Road, Ruawai
 P: 09 4392 703

Notice of Road Closure
 The Cycle/Walkway on the Stop-bank will be closed for maintenance by the R.D.C. between Wilson's Landing Road & Simpson's Road from 30th November until 22nd December

Christmas Decorations

If you want to see some great outside Christmas decorations there are two places worth a visit. One is Gordon Lyndsey on Simpson's Road and another one is Mike Bellamy on Rehia Road. So take the family for a drive after dark for a great experience.





Ruawai Promotions and Development Group

Christmas Programme

WATCH THE NOTICE BOARD ON THE VILLAGE GREEN FOR UPDATES ON CHRISTMAS ACTIVITIES

Float Parade 12th December 2020



Festivities commence 10.00am outside Four Square

Float Parade leaves Community Church at 11:00 am

Santa, Quick Fire Raffles, Sausage Sizzle, Stalls, Christmas Music

Prizes for Best Floats

Monster Xmas Hamper to be drawn on Dec. 17 at the Free BBQ Evening

Further info. regarding Parade Phone: Elaine 439 2221

Decorate your Mailbox! The more festive the better!

This is a Community Competition. Community encompasses
the Village and nearby Rural roads (up to 4km in radius)

If you wish to participate, phone Carolyn @ 439 2507 or 027 439 2028 with details.

Prize for the best Mailbox will be awarded at the Float Parade.

Decorated letterboxes must be ready for judging by 8:30 am on Dec. 12

Free BBQ ON THE VILLAGE GREEN

17TH December From 6pm

Santa, Circus Kumarani, Lolly Scramble, Music

TAKE PHOTOS OF YOUR CHILD WITH SANTA ON THE EVENING

COME ALONG AND ENJOY AN EVENING WITH FAMILY AND FRIENDS

