



June 2018

RUAWAI RAMBLER

A Newsletter for Ruawai and Surrounding Area
From the Ruawai Promotions and Development Group

From the Editor

We have several major sponsors for our newsletter and we acknowledge the sponsor on the first page. We have a sponsor for this issue, but the person wishes to remain anonymous. We do, however thank this person for their assistance.

We have had some changes in Ruawai recently and some more are on the way. Biddy Marychurch retired from being our Post Mistress for many years (see article below). Our Foursquare store has new owners. And Ruawai Transport also has new owners. Another change is the closing of the Corner Place Garden Centre. Etha and George have decided they need some time for relaxation and maybe some travel. We wish them the best. The Vet Centre, our local Veterinary Clinic, has been located for about 50 years in the building which was once also served as the office for the Ruawai Dairy Company. Many of you will know that I worked in this Clinic for about 30 years. Now a new clinic is going to be built next to the Well Cafe. At the time of writing a meeting is planned for the 7th June to explain the plans. We hope to write more about this in the next issue. We may not always like changes, but they are part of life and often bring improvements we had not thought of. These changes show that our town is still doing well. So here is to the future.

The RPDG held their AGM at the end of March and we had a good turnout, which was nice to see, considering that AGM's are not usually well attended. We had an election for membership on the Committee and Lorraine Littler and Des Bickers were elected as new members. Welcome aboard! It is good to get some new blood on the RPDG that can bring in new ideas.

RPDG is in charge of the gardens around Ruawai which includes the Median Strip, around the Gazebo, beside the old butcher shop and behind the little stone church. Elaine Crompton has been doing the "lion's" share, with help from Biddy Marychurch. With Biddy leaving, we are looking for some help with the gardens. We are especially interested in someone who can take care of the roses. If you think you can help out, please get in touch with Elaine Crompton.

Many thanks to our regular advertisers. We cannot do it without your support. For information or comments about the Ruawai Rambler, please contact **J.H.Wessel 09 439 2507 email: jhwessel@xtra.co.nz**

The Gazebo



No visible changes have been made on the gazebo lately, but we are working on it. A few small changes are still needed on the physical building. Meanwhile we have a small Subcommittee working on the displays that will go on the inside. We have sorted through a lot of photos (mostly from the archives of the Kauri Museum) and whittled them down to the number we need. Now we are working on the stories and captions to go with the photos. We hope that by the coming summer we will be able to complete the job. Watch this space!! **J.W.**

Lorraine Littler

Many of you will know Lorraine and, as mentioned above, she was elected onto the RPDG Committee and is already showing that she will be a valuable member. The following is from Lorraine:

I was pleased to be voted onto the committee of the Ruawai Promotions and Development Group earlier this year. It's great to be part of a group which focusses on making our great town an even better place to be. The Committee Members have a few ideas to promote our town further, but as the Group is a relatively small one, we would love to hear any ideas at all that members of the community may have. There may be ideas that haven't been thought of before. Between us all, we can help build on them and make them happen if it's at all possible. Feel free to contact me or any of the Committee Members with your suggestions and we'll see what we can do. **Lorraine Littler** (021 250 8613)

Councillor Curnow's Corner

It's been a full few months at Council as we worked together towards confirming the direction of our first Long Term Plan. I have to take my hat off to our new Mayor, Jason Smith for the way he has embraced the role, especially given he was thrown in at the pointy end of the Long Term Plan process. But together with the many members of the community who shared their thoughts on what we should focus on, we now have a draft that is ready to go through the audit process. The final LTP will be adopted at our June Council meeting. It then becomes the basis for all Council's work for the next few years.

The key themes that came through from the consultation with our communities was that we need to improve the roading network; in particular the unsealed network. We have included this in the draft. You also were keen to see us do more to support and promote growth in our District, which sits well with our vision of "Thriving Communities Working Together".

Personally, I was delighted to also see a good degree of support for our walking and cycling strategy. I'm looking forward to our District having more activities to encourage visitors and residents alike to engage with our beautiful environment. We do have quite a treasure trove to offer. It's now a matter of working with communities to open this up thoughtfully; and then to find the right ways to create jobs and revenue that will enrich all of us.

As you will no doubt have seen in the local media, Council has appointed a new Chief Executive Officer, Louise Millar. I was fortunate enough to be part of the recruitment process and can assure you that we received a substantial number of excellent candidates. It appears that Kaipara is now seen as a District in which high quality candidates can make their mark. That's a great place for us to be and I'm confident that Louise will impress you as much as she impressed us.

Just a couple of weeks ago I attended my first Raupo Drainage Committee, as a committee member. It was a real honour to sit amongst so much knowledge and history. Your elected community members share a wealth of understanding of our drainage network. It is my experience that when Council sits alongside community, great things can happen. This has certainly been the case with the Drainage Committee. I look forward to working with the committee members at future meetings.

Finally, on 21st May I, along with Penny Smart from Northland Regional Council, were asked to judge the Paparoa Lions Junior Speechmaking competition. This included children from years four through to eight, from schools from Maungaturoto through to Matakohe and included topics as diverse as the history of chocolate, peer pressure, good manners and New Zealand's darkest hour. Each of the speakers had done impressive research on their topic and spoke well. It is a lot harder than it seems, to stand in front of a crowd and convey your message.

As always, if you have any questions please feel free to contact me on 021 667 124.

Anna



The Vet Centre Ruawai

www.thevetcentrenorthland.co.nz

Production and Companion animal veterinary services & animal health products

**Proudly servicing the Kaipara and surrounding
Communities - 24 Hour emergency service**

23 Jellicoe Road 09 4392506



**We Care:
Animals People
Community**



Books @ Ruawai - Giant Book Sale !

Since opening the doors in March 2017, the Bookshop has received many more books and we have managed to utilise some storage in the old Butcher shop next door. We are having a sale of books from the old Butcher shop through the week **starting Monday 25 June to Saturday 30 June** basically during shop hours which are:

Mon, Tues 9 am – 12 noon

Wed, Thurs, Fri 2 pm - 4 pm

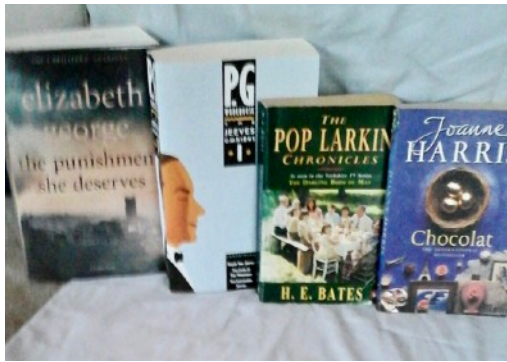
Saturday 10 am – 1 pm

You can buy a bag of books of your choice for \$5.

There will also be reduced prices on other books, especially those in the old Motorbike Shop.

5 Freyberg Rd, Ruawai Ph 09 439 2044

In the last Rambler we started a Book Corner, written by Sue Neal. As mentioned, Sue works in the Books@Ruawai shop. If you need a book or want to know about a particular book, go and see Sue **J.W. Book Corner**



Well it's getting colder, so time to curl up with some books in a comfy chair with a mug of hot chocolate. These are a few of the books that make me feel good, or make me laugh; the perfect "pick me up" to a cold winter's night.

The first is "Chocolat" by Joanne Harris, a feel-good book that takes you to small-town life in rural France. Quirky, funny and, as in real life, full of love, death, bravery - but mostly happiness. One that's hard to put down once you've started it.

The "Pop Larkin Chronicles" by H E Bates, a classic and oh so good; I read this time and time again. This is about the Larkin family, set in Kent in the 1950's. The characters are full of life, laugh out-loud funny and if it doesn't make you feel good, then I don't know what will. By

far one of my favourite books of all time.

"Jeeves" by P G Wodehouse. Jeeves is the long-suffering butler to Bertie Wooster, who thinks he makes all the decisions and gets out of all the scrapes when really it is Jeeves who is the clever one and keeps Bertie on the right path; a path that also gets Jeeves exactly what he wants from life!

Last, but not least, it's not a funny feel-good book but it is a new release by a great author.

"The Punishment She Deserves" by Elizabeth George. A crime novel featuring Detective Inspector Lynley and Detective Sergeant Havers, an unlikely duo, one upper crust, the other working class. Theirs is a partnership you wouldn't think would work, but it does; they compliment each other beautifully. Elizabeth George is a master at plotting and the attention to detail in her murder mysteries makes them a "must read" every time a new one is released. This is no exception. Every book featuring the 2 detectives can be read on their own; but if you like this one, try getting the first book about them and follow how their relationship develops over time.

Sue Neal

<p>Broken Windows Cat Doors Ranch Slider Rollers Latches and Catches Caravan Windows Rubber Seals Table Tops; Lead-light Repairs Phone Kyle: 021 137 6353</p>	
--	--

<p>T. GLASS PANELBEATERS since 1984 Replacement or repair of stonechip windscreens</p> <p>5 PORRITT ST. Ph.Fax.(09)4392416 RUAWAI email:tgkumara@yahoo.co.nz</p>
--

Stop-bank Walk/Cycle Way



Work has begun on the resurfacing of the Stop Bank Walkway, which is very exciting for all the committee members. Unfortunately with the wet summer and recent rains, the first stage from the wharf to the end of Westlake Road is simply too soft to work on at this point so will have to wait until later in the year when things dry out a bit. But the portion from the end of Westlake Road to Wilson's Landing is well underway and is looking great. Thanks to Tim Jenyns for his work in reshaping the stop bank top and to Ruawai Transport for their work in supplying and placing the lime for the surface. We are so fortunate to have great local suppliers helping with this project. Another local supplier who is involved is Janet Curle from Wild Side Design who is working on the designs of the signs that will be placed along the walk way. We will have one 'wayfinder' sign, one about the history of the area, one about the technology of the stop

banks, flood gates, ditches and drains, and one about the wildlife you might encounter along the way, including those mudcrabs that simply will not pose for a photo, try as I might. The committee is also working on a launch event later in the year, which we are hoping might become an annual event. More of that in future updates. In the meantime, I encourage you to take a walk along our developing walkway. The views are gorgeous!

Anna Curnow



SOLD

**LOT 1, 2, 3 & 4, | 188 TINOPAI ROAD
TINOPAI**



SOLD

**245 OPANAKE ROAD
DARGAVILLE**



SOLD

**23 BEE BUSH ROAD
ARAPOHUE**



SOLD

**189 BLONG ROAD
RUAWAI**



SOLD

**HOKIANGA ROAD
DARGAVILLE**



Catherine Stewart

Top Country Salesperson - Bayleys in the North 2016/2017

0800 422 959 | 027 356 5031 | catherinestewart.bayleys.co.nz

Download my free APP today on iPhone or Android

MACKYS REAL ESTATE LIMITED, BAYLEYS, LICENSED UNDER THE REA ACT 2008



**TOP 5% OF BAYLEYS SALES
PEOPLE 2017/2018**

Dargaville Hospital Gold Star Wishlist - donations needed



The Gold Star WishList contains items which are 'nice to have' but not essential, they would make the stay nicer for patients but are not funded by the Health Board. Fundraising for Recliner Chairs is our priority at present. When you've sat beside a loved one in hospital for a period of time worrying about their wellbeing, it literally becomes uncomfortable for you. Kaipara Community Health Trust is fundraising to make Dargaville Hospital more comfortable for both the patients and visitors with the aim of purchasing four Recliner Chairs suitable for high usage in the hospital environment. During the last 6 weeks we've received donations from several local Service Clubs including *Ruawai Lions Club*, thank you for your \$500 donation, and collected community donations outside of Countdown raising nearly half the funds required. We're part way there. If you'd like to make a donation, or sponsor a whole chair to help make our great little hospital on the hill even nicer please either call Debbie Evans 439 5050 or email devans@kcht.co.nz to request bank account details or post a cheque to Kaipara Community Health Trust, PO Box 363, Dargaville.

Debbie Evans CEO Kaipara Community Health Trus

Service for all types of Mowers and Chainsaws
Happy to support Ruawai
Phone 09 439 8881

Godfrey's
CHAINSAWS & MOWERS

G & V FINLAYSON LTD
Guy Finlayson
Certified Plumber

Roofer - Tiler
6 Bayly Street, Baylys Beach 0377
Mobile : 021 411 457
Home : 09 439 0901
Email : guyandviki@xtra.co.nz

Farewell to Bidy and Ray Marychurch



Bidy with the clock and cutting the cake

Bidy and Ray have served our community long and well. For many years they ran Ruawai Traders, supplying Ruawai with a great variety of products. Meanwhile, when our Post Office closed, Bidy took on the running of the Post Shop. It was not an easy project. By her own admission, Bidy was not very 'computer savvy' so she made a lot of use of the Postal Services 0800 number. But she was a quick learner and became a good 'Post Mistress'. On Monday, April 23rd Bidy opened the shop for the last time and gave a farewell lunch for her customers. There was a good turnout and we all enjoyed the sandwiches and other goodies. There was a large cake made by Denise Brownlee. Bidy gave a warm farewell speech. Bruce Crompton thanked Bidy and, on behalf of RPDG and the Ruawai Community, presented her with a lovely clock made of swamp kauri. Ray and Bidy are leaving Ruawai and will be living in a caravan on a quiet bay up North. I am sure they will remember Ruawai and turn up for a visit once in a while. Meanwhile, we wish them all the best and a happy retirement. **J.W.**

Cross Stitch in Ruawai

Cross stitch was once a commonly-practiced needle craft, but has lost some popularity in the last few years. However, a small, but dedicated group of cross stitchers, meet every month at Carolyn Wessel's home to show their works of art, and discuss and help with problems. Shown here are a few examples their efforts. For information phone Carolyn, 09 439 2507



Girl with Pets by June Webber



Native American Girl with Wolf Pup by Elaine Crompton



Highland Cow by Carolyn Wessel

Classified Advert. Wanted to Buy: Trailer suitable for small 12ft. boat.
Contact Mark McLaughlin: 09 439 2016

Ruawai Transport

Ruawai Transport has been around for many years. It started out mainly as a limestone quarry owned by the Thurston brothers, Neville and Grenfell. When they retired they sold it to Barry Mockett and Brian Ringrose who have developed it into a thriving transport business. Barry, Sue, Brian and Karen worked hard for nearly 40 years and recently sold to McRobbie Dowling. They organised a lovely luncheon at the Sports Club to thank all their customers. Best wishes to all of you for the future years.... **J.W.**




Grenfell Thurston at the quarry




The Commer trucks that were used at the quarry


IN STOCK NOW!



PALM KERNEL TRAILERS




LEVELLERS



ROLLERS

View our website: www.cromptonengineering.co.nz

CROMPTON ENGINEERING  **PUMPS AGENT**

31 Jellicoe St, Ruawai • Ph 09 439 2393

NEW SHOW ROOM NOW OPEN!
GREAT NEW LOOK IN STORE!
PRODUCTS AT GREAT PRICES!



A: 18-22 FREYBERG ROAD, RUAWAI | PH: 09 439 2243 | FB: @BEDSNMOREOUTLETSTORE



Scams, Scams Everywhere

Like me, you are probably receiving a lot of emails telling that “you have been very lucky and won a prize - please click on the message”. Incoming emails are full of many scams going around. Just the other day I read that in the first three months of 2018, cybercriminals managed to steal \$2.9 million from New Zealanders. Those over 65 lost \$1million - the highest losses across all age groups. Apart from email scams, telephone scams are common. By now we are hopefully all aware of the person calling to say your computer has problems and he/she is just the person to fix it for you. In another one you receive a call from a person supposedly associated with the Chinese Embassy and they have an important parcel for you. Apparently these people can get quite nasty and will threaten you or your family if you don't go along with them. Hang up on any of these immediately. Some phone scams claim to be from the IRD alleging that you owe money and will be arrested if you don't pay up. The list goes on. **So, be warned and be vigilant. As the saying goes - “If it seems to good to be true, it probably is!” If in doubt ask someone you know and trust.**
J.W.

“Before you criticise someone, you should walk a mile in their shoes. That way when you criticise them, you are a mile away from them and you have their shoes.”

Otamatea Prefect Visit



During last term on the 9th of April, Mrs Harré took us Head Prefects Sophie and Jack along with deputies Tristan and Harriet to attend a prefect meeting at Otamatea High School. The head and deputy prefects and principals from our neighbouring schools, Dargaville High School and Otamatea High School, also attended the meeting. This was a great opportunity for us as head and deputy prefects to get together and discuss our role in our schools, and what those various roles entail. Some of us had never met before, so it was great to get to know each other and discuss why we wanted to fill leadership roles within our schools. The meeting was a way to be able to relate to students our age who have similar roles and duties in different environments and to build a rapport with them bringing our schools closer opening more opportunities to collaborate and benefit each other. By talking to each other it gave us all ideas on how we could grow and improve as head and deputy prefects. During the meeting, we also talked about the upcoming events within our schools such as the various school balls, socials and fundraising events sharing insight and suggestions. We also discussed ways our schools could interact with each other more, such as a sports exchange and similar events. This term we hope to host another meeting to catch up with the heads and deputies from Otamatea and Dargaville to discuss what we have accomplished so far in the year and do further planning on collaborative events between our schools - **Sophie Blundell and Jack Brewster**

CAITLIN'S PEANUT BUTTER COOKIES

You will need:

150g soft butter
150g smooth peanut butter
1 teaspoon of vanilla essence
225g soft brown sugar
2 free range eggs
200g plain flour
1 teaspoon baking powder
½ teaspoon salt

OPTIONAL:

100g chopped raw peanuts or chocolate chips

Equipment:

A large mixing bowl
A wooden spoon
A fork
A sieve
A large non-stick or greased baking sheet
Oven gloves
A wire cooling rack



1. Preheat the oven to 180° Celsius
2. Put butter, peanut butter, vanilla essence and sugar into the mixing bowl and beat together. Next, beat the eggs with a fork and then beat them into the mixture.
3. Sift the flour, baking powder and salt into peanut butter mixture. Combine until the mixture is smooth. Stir through peanuts or chocolate chips (optional).
4. Drop teaspoons of the mixture onto the baking sheet. You don't have to spread them. Bake them for 10 minutes if you like them chewy, or for 15 minutes if you like them crispy.
5. Let cookies cool on the baking sheet for 5 minutes and then move them to a wire rack to cool completely.

Caitlin King's Peanut Butter Cookie Recipe

Caitlin King has been cooking up a storm these school holidays! Her recipe 'Peanut Butter Cookies' appeared in the latest issue of Upstart Magazine. We encourage you to try the recipe out for yourself! Congratulations Caitlin for making it into the National magazine once again!

Books @ Ruawai

secondhand books/music

Now Open

Monday & Tuesday: 9 - 12 am

Wed., Thurs. Fri.: 2 - 4pm

Saturday: 10 am - 1pm

And other times by request.

Phone: 027 200 5653

022 073 9752

Shop phone: 439 2044



Open Hours
Monday to Saturday 8am - 2.30pm
23 Freyberg Road, Ruawai
P: 09 4392 703

P & T CONTRACTORS RUAWAI LTD

Phone 021 804 874

crew@vodafone.co.nz

Facebook page, P & T Contractors Ruawai

Disking

Powerharrowing

Effluent Spreading

Spraying





Connections Real Estate

Hello Ruawai and thank you for your support to date. I'm enjoying my new office and the visitors I get popping in regularly. I have listed and sold my first Ruawai residential house, which sold very well after some advertising in the Herald so that was quite exciting. I have also sold a dairy farm and have another one under contract, with some beautiful new listings in the pipeline for Winter. Winter is actually a good time to be selling because supply and demand are the driving forces of any market and there is not much available for buyers to look at right now. I'm enjoying being located in Ruawai CBD and I'm a great advocate for our town and our community so if you are thinking of selling I would be happy to help you!

Kind Regards, Nicky.Reid



COME SEE YOUR AWESOME RD1 TEAM FOR ALL YOUR FARMING NEEDS

We are the best farming store in town with the total package

- Great service
- Deliveries
- Dairy shed supplies
- Stock feed and nutrition
- Pasture and cropping advice
- Chin wag and coffee specialists



(09) 439 2244
 OPEN: MON-FRI 8-5 SAT 9-1
 CLOSED PUBLIC HOLIDAYS

If you have a problem that can be fixed, then there is no use in worrying. If you have a problem that cannot be fixed, then there is no use in worrying.
 - Buddhist Proverb -

ANZAC Service in Ruawai

Our community has always supported the ANZAC service, and this year was no different with over 100 people present. The President of the RSA, Alex Stewart did a great job of fronting the ceremonies, ably assisted by his wife, Mary. After the parade and laying of the wreaths outside, everyone moved into the Hall. The Ruawai Community Choir led the singing of the traditional hymns and later led in the singing of a medley of songs from the war times. The speaker was Ian Beatty and Ian gave a very moving talk that had everyone listening intently. After the service everyone was invited and gathered in the Social Lounge for a lovely light luncheon provided by the RSA ladies.

Congratulations to Alex and Mary Stewart for a great job.

.J.W.



4 FOUR SQUARE

Your friendly local Four Square
How convenient

Open from: 7am to 7pm Monday — Friday
8am to 7pm Saturday

RUAWAI FOUR SQUARE
FREYBERG RD, RUAWAI, PH 09 439 2011

Anthony Martinovich

Ruawai Tyre Service

33 Jellicoe Road
p. 4392 492

Service you can trust

Ruawai Garden Club Doings.



The “Fernery” in Whangarei

Hi to you all out there, I hope life has been treating you kindly. As for all our members, the aches and pains seem to increase as winter rolls in. We have had a couple of trips. The one in March was our last one with Gary, our wonderful driver for many years, as the business was sold. On March the 6th we went to the Tiria Mosaic Gardens, or Smithymans as some call it, near Waipu. What a wonderful garden, and amazing, beautiful mosaics tucked round every little corner. As you walk around they explain to you how they started, and how long it took. At the end we had a cuppa, and bickies, while they showed us before and after photos. They had some plants for sale, including bromeliads, their speciality, and a little shop where you could buy the mosaics. This was truly one of the best gardens I have been to. If you ever want to visit a garden, this is the one. On from there to the Waipu Golf Club for lunch, which we had pre-ordered. Very pleasant. We also had some of our members go to Lyn

Chapman's garden near Kaihu in April. Nice garden, with a great deal of hibiscus, and hydrangeas. From there we met for lunch at Jo's in Dargaville. I always enjoy my meals there, so very tasty. Yummy. Anyway to future events. Our AGM is at the Bowling Club on Thursday 21/6/18 @ 10.00am. All welcome. The Camellia Display is on the 21st July, so keep this day free, and join us for lunch at the Ruawai Hall. Stalls etc., to view & wander round. Finally the Rose Show will be on the 10th of November. We will give you details of this in the next newsletter. Happy weeding all.

Merle Jackson

This article was contributed by Peter Flood - Thank You Peter

The new season is about to start and by all accounts, farmers are well placed with good grass covers and able to meet condition score targets. The advance Fonterra payout is looking better than last year which is promising which, in turn, all helps our little community of Ruawai and surrounding areas to prosper. The previous season was challenging and that is putting it politely. We started with our key batsmen well fed, watered and rested. The full stand of excited fans had high hopes, but “nek minnit” out!! This was the wettest winter/ spring I have honestly ever seen because it rained for two months longer than any other. It was hard on pastures, animal and human.

Our key players gone and a poor count on the board, we were counting on our second tear to get some runs up, but “nek minnit” out!! When the rain finally stopped, it did just that for months. Damaged pastures and dry conditions meant poor growth, very little supplements made and a run rate looking like another apologetic phone call to the bank. Looking like game over with only two low tear players left, who we usually never could count on. The stand was starting to empty, “nek minnit” not out!! Runs were starting to add up and the few hearty people still in the stand were well rewarded with most farmers having a good or record amount of runs scored. The rain came and the grass grew, albeit a bit late.

I will change the subject a bit now and talk about the Dargaville demonstration farm. We have just had the final field-day for the three-year trial just completed. It was a great day with 130 farmers and RPs present. They were well rewarded with good speakers, good trial wind-up data and a bloody good lunch put on by Silverfern Farms. You can view the outcome from the day by googling NDDT or NARF.

We are currently starting a new three-year trial based on “managing within the three Kg rule”. It will comprise of three farmlots again, a grass-only farmlot, a grass and PKE farmlot, and a grass PKE and other mixes of food farmlot. The latter two have a higher stocking rate and can use supplements just to fill the gaps in pasture growth. Our website will be updated fortnightly with the farm report from our manager, Kate. Lastly, start the new season by shouting your valued staff, new and old, out for a lunch or dinner. If you don't have staff then shout yourselves out. You don't have to drive far because we have a great caff in town “The Well” the “Ruawai Dairy” on the corner and “Uncles Kai Cart” down Wharf Rd. They all have great food selections and great service. All the best for 2018/2019 season. **Peter**

Special fun at The Kauri Museum for 'Special Friends'

Staff and volunteers at The Kauri Museum welcomed a group named 'Special Friends' to the museum last week. Visiting for the day from Mangawhai, the group was set up in February this year by Ann-Marie Wilkinson and her friend, Sandy Brown, who realised that special needs people had to travel to Orewa for social activities as there was nothing local. Starting with four participants, the group has already grown to eleven regulars. Members suggest ideas for activities, Ann-Marie organises the event, notifies through a Facebook page and on Wednesday each week they're off. A woodworking workshop, magic lantern show and gum polishing were the choices at The Kauri Museum. Working to a design developed by the volunteer engineering team at the museum, the 'Special Friends' fastened together pre-cut timber pieces to produce a wooden planter box to take home. Furious action at the polishing table, supervised by another team of museum volunteers, saw a piece of polished gum for each visitor also making the trip home. 'Special Friends' is not affiliated to any other organisation. The emphasis is on the participants having fun but they all pay their own way and the group does not seek or receive any funding. Ann-Marie is a teacher but finds time to put in several hours each week to co-ordinate and accompany each outing. As she says, "the rewards are enormous. The group's social skills and engagement with others has blossomed with regular contact outside their own environment". 'Special Friends' will be returning to The Kauri Museum on a regular basis once every school term to enjoy more workshops especially developed to meet their needs. The group can be followed and contacted through their Facebook page and they welcome anyone who wishes to join in the fun.

Mary Stevens



Polishing kauri gum



Making planter boxes



FUELING YOUR SAVINGS!

UP TO **8¢ OFF** per litre

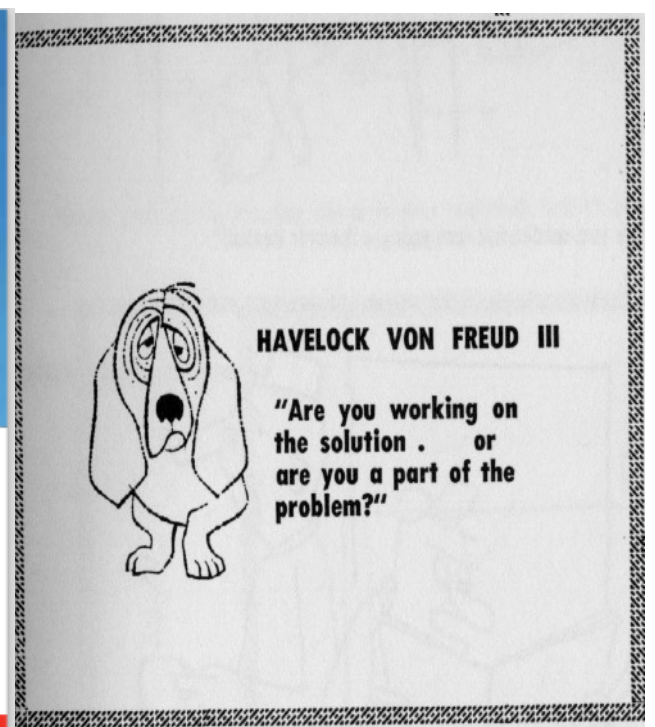
Challenge is the only fully owned and operated Kiwi service station network supported by SuperGold. That's why when you fill up at your local Challenge station, you'll save up to **8 cents per litre** on fuel!

Visit Challenge Ruawai your friendly one stop shop for all your motoring and convenience needs.

Ruawai Motors
Jellicoe Road, Ruawai
Open 7 days, 7.00am - 7.00pm

CHALLENGE !

www.challenge.net.nz



HAVELOCK VON FREUD III

"Are you working on the solution . or are you a part of the problem?"

*Don't ever confuse what is legal with what is moral... You're either principled or you're not
Oprah Winfrey*

PACIFIC PEARLS AT NAUMAI MARAE THIS WEEKEND!

For the second year in a row the Pacific Pearls Prophetic women's Christian ministry is having a hui (open to everyone) at Naumai Marae THIS WEEKEND (15 – 17 June). Come expecting your healing, breakthrough, encouragement, fun and fellowship in the presence of God.

Founded by Stephanie Harawira, Pacific Pearls has exploded across the country in the past couple of years with hui held somewhere in NZ almost every second weekend.

Sharing the love of God with music and korero is the theme and, although predominately led by Maori women, men and all nations are very welcome.

Guest speakers this year include STEPHANIE HARAWIRA, CLAUDINALL TURNER, LISA PICKERING, BERYL HENWOOD, TRENT MEMBREY (C3 Church Whangarei), TAWHIRI LITTLEJOHN (Kaiwaka Revival Church) and RICHARD NAHI (Breakthrough Church Hokianga in Kohukohu).



PACIFIC PEARLS NAUMAI

Friday 15 – Sunday 17 June, 2018

4139 SH12 (3.5km north of Ruawai or 31km south of Dargaville)

A multi-cultural gathering of men and women who desire to see God's presence manifested through prophetic worship and teaching—and Holy Spirit activation through spiritual gifts.

Three days to be encouraged, inspired and equipped!



PS STEPHANIE HARAWIRA
West Auckland



CLAUDINALL TURNER
West Auckland



PS MARY DOWNS
Rotorua



LISA PICKERING
Whangarei



BERYL HENWOOD
Paparoa



PS TRENT MEMBREY
Whangarei



PS TAWHIRI LITTLEJOHN
Kaiwaka



PS RICHARD NAHI
Hokianga

The programme is as follows:

Starts Friday 15 June Naumai Marae, 4139 SH12 (3.5km north of Ruawai or 31km south of Dargaville)

4pm Powhiri and Registrations. 6pm Dinner, Worship, Speakers, Finish 9.30pm

Saturday 16 June

7.30am Breakfast, Worship, Speakers, Lunch 12.30

Speakers, Prophetic Ministry, Dinner 5.30pm. 7pm Worship, 7.30pm Speaker, Close 10pm

Sunday 17 June

At Ruawai Community Church, 47 Freyberg Rd

10am Worship & Karakia, 10.30am testimonies with Stephanie. 12pm Lunch at church

The Naumai event is being organised by Lynette Chapman and many helpers. There is a conference fee or koha payable at the door.

Costs cover: • Koha for the Marae • Koha for speakers •

Meals: FRI dinner, SAT breakfast, lunch & dinner, SUN breakfast at Marae & lunch at RCC

Friday only \$20, Saturday only \$50 or \$70 for the full weekend.

Registration fee includes accommodation at the Marae if required. For further details contact : LYNETTE CHAPMAN 020 413 64950 or JANET CURLE 09 4392 713 or 027 318 6093.

Janet Curle

RUAWAI
AUTO SERVICES

For all things automotive
See the best in town!

CALL US NOW!
09 439 2424

23 Freyberg St, Ruawai

DIESEL TUNING CHIPS
AVAILABLE HERE NOW -
FOR TRUCKS, UTES,
TRACTORS AND MORE!



MATARIKI SEASON AT THE KAURI MUSEUM

Mid-June marks the beginning of Matariki (Māori New Year) when the Matariki star cluster, also called the Pleiades or Seven Sisters, rises in the sky. For many years, The Kauri Museum has worked with seven primary schools of the old Otamatea area to produce themed story boards for display. This year's theme is 'Ngā Ika o Otamatea'. Each of the participating schools has been given the name of a fish, numerous in their area, and asked to interpret the subject in any manner they wish. To mark the opening on the first day of Matariki, 15 June, Bernard Makoare will demonstrate the making and playing of traditional Māori musical instruments, taonga puoro, followed by a preview of the exhibition. The afternoon will be dedicated to kapa haka performance before students return to school. Anyone interested is invited to attend.

When: Friday 15 June, 10am-2pm

Where: The Kauri Museum, 5 Church Road, Matakoho.

Queries: email admin@kaurimuseum.com or call (09) 431-74

MATARIKI RARANGA FLAX WEAVING WORKSHOP

Our 2018 Matariki programme also includes the opportunity to attend a raranga flax weaving workshop. There are two workshops scheduled, the first held over a weekend and then a later, mid-week course. These are tutored by Whaea Geraldine Jenkins. Participants will learn the correct protocols for harvesting harakeke, preparation of the fibre and then weave their own kete to take home. Bookings are essential for the workshops.

When: Saturday 16 & Sunday 17 June 10am-3pm OR Tuesday 24 & Wednesday 25 July 10am-3pm

Cost: \$40 per person

Bring: your lunch, an old shirt/ apron, a flat wooden board, a blunt knife

Where: The Kauri Museum, 5 Church Road, Matakohe

Queries: email admin@kaurimuseum.com or call (09) 431-7417 Lisa Tolich CEO, The Kauri Museum

Matakohe Bridges, May Update



The Matakoho Bridges realignment project has benefited from autumn's weather being relatively more predictable and typical than that experienced over the summer months with good progress being made since the last email update.

Limestone continues to be cut from the local Matakoho quarry and used as subgrade for the realignment of SH12.

Additional sediment ponds have been installed as works progress to control all water runoff, all controls are regularly audited by Northland Regional Council.

Bridge No.1 (Parerau Stream) piling works are underway now the limestone western embankment is complete to underside of

pavement; please see the attached West End picture taken by FLYUAV drone on 3 May.

Bridge No.2 (Matakoho River) temporary staging installation has commenced and will continue over the coming weeks. Once in place, piling will commence.

Earthworks either side of Matakoho River are progressing with the western side abutment/causeway having been built up 11m of the 15m finished height; please see the attached East End picture taken by FLYUAV drone on 3 May.

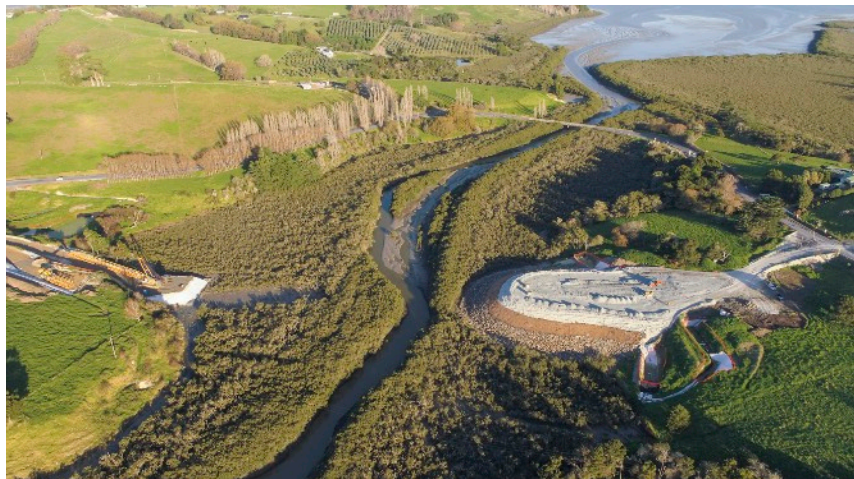
Moving forward, drone footage will be shot regularly and loaded on NZTA's Matakoho Bridges webpage; <http://www.nzta.govt.nz/projects/connecting-northland/matakoho-bridges>

Please contact Jenny Scott should you have any queries or feedback regarding drone flyovers or other aspects of the project, her contact details are below.

Construction of both bridges will occur throughout winter and into summer.

The site traffic manager reports that drivers are generally observing the speed limits through site, thank you and please continue to do so.

Thank you for your continued interest in, and support of, the project. It is much appreciated by all involved in delivering the realignment of SH12 through Matakoho. All the best, The Matakoho Bridges team.



Rainfall Figures from Kura Newall 2018

Jan.	133mm
Feb.	212mm
March	- 120mm
April	- 93mm
May	- 174mm
Total	732mm

2017

Jan.	19mm
Feb.	78mm
March	- 195mm
April	- 123mm
May	- 116mm
Total	531mm

Sometimes I think the surest sign that intelligent life exists elsewhere in the universe is that none of it has tried to contact us.